



4TH PRIMARY
SECOND TERM
NET REVISION



1) Complete the following sentences from the brackets:

(Network – Internet Explorer – Modem – Internet - Email)

1. Means connecting computers to each other's for sharing the information and providing some services, and they may be in the same room, building or in separated places .
2. is a device used for connecting the computer to the telephone line.
3. Is used for displaying the Internet pages and sites.
4. We can get information with the least cost via
5. We can send and receive emails in a short time using

2) Complete the following sentences from the brackets:

(Identity theft – Password – Virus – Hacker – Wasting Time)

1. is undesired program and it has destructive functions and is able to reproduce itself.
2. Stealing the personal data as the passwords and banks accounts details is called
3. The person who makes the non-permitted penetration of the computer is called
4. From the precautions for using the computer, is to protect the computer via
5. From the negative effects of using the Internet is





3) Complete the following sentences from the brackets:

(HTML - Address Bar – Information Pages – Hyperlink – Internet Explorer)

1. The site consists of one or group of connected
2.is of the most famous browsing programs.
3. Internet Explorer is used in opening thefiles.
4. The desired site address is typed in
5.is a text or image in the information page and when click on it, another site will be opened.

4) Complete the following sentences from the brackets:

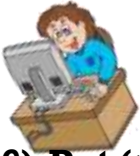
(Notepad – Source – HTML – Tag – Internet)

1. HTML files should be with the extension of.....
2. Using HTML doesn't need connection to
3. We can view the programming code of any web page throughFrom View menu.
4.Is an editor which is used for typing the HTML commands.
5. is the statement between the brackets <>.

5) Put (√) or (X):

1. Internet Network is one of the most important sources of the information. ()
2. We should use a browser for opening the Internet pages. ()
3. The site www.google.com is from the most important sites for creating free emails. ()
4. The connected computers for creating a network should be in the same place. ()
5. The ease of dealing and connection are of the advantages of the Internet network. ()





6) Put (✓) or (X):

1. We can browse the Internet Sites and pages without using any browser. ()
2. There is one way for opening Internet Explorer through its icon on the Desktop. ()
3. Hyperlink may be in the form of text or image in the information page. ()
4. We can load the site after typing its address through clicking Go on the Address Bar. ()
5. The first site page which appears is named the default. ()

7) Put (✓) or (✗) :

1. HTML isn't a programming language similar to the other programming languages. ()
2. When using HTML the computer should be connected to the Internet. ()
3. The browser never affected by the spaces or lines between the statements. ()
4. The statements are typed between brackets () in HTML. ()
5. All the files typed in HTML code should begin with the tag <HTML>. ()





8) **Match from (A) to the suitable in (B):**

A	B
1. E mail ()	A. To get information in any field and in anytime.
2. Chat ()	B. For providing the selling and buying information via Internet
3. Search ()	C. For making conversation among many persons on the Internet.
4. E-commerce ()	D. For sending and receiving emails.

(1,) (2,) (3,) (4,)

9) **Put (✓) or (X):**

1. There may be many sites with the same addresses. ()
2. Virus is unwanted program which leads at destructing the computers files and programs. ()
3. Using the Internet for long periods leads at being addicted to the Internet and wasting time. ()
4. Viruses aren't able to reproduce themselves. ()
5. We should type the site address accurately. ()





10) Choose the correct answer from the brackets:

1. After opening Internet Explorer, the website address is written in the bar.
(Address – Menu – Website Address)
2. To load the site, click Go or press Button from the keyboard.
(Shift – Enter – Ctrl)
3. To print a page containing important information from any site, click Print from Menu
(Edit – File – View)
4. We can chat with any person all over the world at the same time via Internet through
(Email – Search – Chat)
5. From the requirement for connection to the Internet.
(Paint – Telephone line – T.V)

11) Choose the correct answer from the brackets:

1. One or group of related web pages is called
(Site main page – website – web page)
2. A link which transfers you to another site is (Site address – email – hyperlink)
3. After typing the site address in Internet Explorer, press Button from the keyboard to load the site.
(Alt – Shift– Enter)
4. click on Internet Explorer icon to open this site window.
(One – double – three)
5. The site address is typed in in the browser window.
(Address Bar – Title Bar – Tools Bar)





12) Give the suitable term for the following sentences:

1. The tag which contains the title of the web page which appears in the browser's Title Bar. (.....)
2. Means all what is typed between the brackets < >. (.....)
3. A simple and easy language which is used for creating and designing the information page on the Internet. (.....)

13) Correct the underline in the following sentences:

1. You can view the code of any information page by opening **File** menu and selecting Source in the browser. (.....)
2. The difference between the start and end statements is _. (.....)
3. To save the statements in **Notepad**, select **Open** from **File** menu. (.....)
4. **WordPad** is one of the Internet browsers. (.....)
5. All HTML files should ends with the statement <HTML>. (.....)
6. All the contents of the web page are typed in the code between the start and the end of the tags <HTML>. (.....)

14) Complete the following:

From the advantages of the Internet Network:

1.
2.
3.
4.





15) Put (✓) or (X) :-

1. BgColor property is being shared by many Tags. ()
2. To view the designed files by HTML, use the paint program. ()
3. We can't change style of the default font of the browser. ()
4. To change the font style, we use the property Face. ()
5. Align is used for changing the text location in the web page. ()

16) Choose the correct answer from the brackets:

1. BgColor is used with Tag (<P> - <Body> - <Title>).
2. To save changes, select (Save As – Open – Save).
3. From the properties of < P> Tag is (Align – BgColor – Background).
4. To refresh the web page and view the changes, press Button on the keyboard. (F2 – F5 – F3)
5. We should type the text which needs to be processedEnd Tag. (Before – With – After)
6. To change the font size to bigger font:
 - a.
 - b.
 - c.





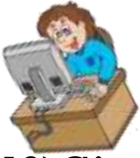
17) Put (✓) or (X):-

1. When using the Tag
, it should be ended with the Tag </BR>. ()
2. The property Dir is used with the Tag <Body>. ()
3. Center tag is used for aligning the text to the middle of the web page. ()
4. To create a numbering list, we use the tag and to determine the end and start of the list. ()
5. The single tag is used for creating the items in the sequential list only. ()

18) Match from (A) to the suitable in (B):-

A		B	
1	<Center>	A	It is a single tag which is typed at the end of the line for creating a new line or paragraph.
2	<P>	B	A property which is used for controlling the shape of symbols in the lists
3	 	C	A tag for aligning the text at the middle of the page in general
4	<DIR>	D	A tag which is used in alignment by using the Align property
5	Type	E	A tag for adding an item in the list
6		F	A property which is used to control the text direction in the page

(1,) (2,) (3,) (4,) (5,) (6,)



19) Give the suitable term for the following sentences:

(Start button – program – loading a program)

1. Copying a program from the hard disk to memory and the program display on the screen. (.....)
2. A button on the desktop, when clicking it, a menu opens and is used for opening programs. (.....)
3. One or more files saved on the memory, when double click on it, a copy of it will be on the memory and will appear on the screen. (.....)

20) Match from (A) to the suitable in (B):

A		B	
1	Status Bar	A	An empty white space for typing in it.
2	Title Bar	B	A set of menus containing commands.
3	Scroll bars	C	It appears in the typing space and takes the shape of I
4	Text Cursor	D	It contains the program and file names.
5	Tool Bar	E	It is down to the program window and it displays information about the page.
6	Menu Bar	F	It displays the hidden location in the page.
7	Space of writing	G	It contains icons for the important commands in the menus.

(1,) (2,) (3,) (4,) (5,) (6,) (7,)



21) Complete the following sentences from between brackets:

(Format – Format Bar – Edit – Selection – Open - File)

1. means selecting a part or all of the text to format it.
2. means the style of text as the text size and color.
3. To open a text file on the computer, select from File menu.
4. We can format the text by
5. To create a new Document, select "New" from Menu.

22) Match from (A) to the suitable in (B):

(A)		(B)	
1	B	A	To make the font italic.
2	<i>I</i>	B	To underline the text.
3	<u>U</u>	C	To make the font bold.

(1,) (2,) (3,)





23) Put (✓) or (×):

1. When making changes to a previously saved file, there will be no difference between Save and Save As. ()
2. There is automatically an icon for Save As in the Toolbar. ()
3. We can't connect many printers to the computer. ()
4. Print and Print Preview have icons in the Toolbar. ()
5. We find Save and Print command in Edit menu. ()

24) Complete the following sentences from the brackets:

(File – paper – Print Preview – Close – Save As – Save in)

1. To select Save As, open Menu.
2. When applying changes to a previously saved file and we want to change it name or location, select
3. Select save location from the menu beside
4. We use to make a preview of the page before printing it.
5. To close Print Preview window, click
6. The printer is a device which is used to get the document in the form of



Model One

A. Put (✓) or (×):

- 1) Internet network means the connection of computers in the same location. ()
- 2) Hyperlink may be in the form of an image in the web page. ()
- 3) Paint program is used to deal with the texts. ()
- 4) The site may be one web page or more connected together. ()
- 5) The virus is a program which has destructive and unwanted functions. ()

B. Complete the following sentences from the brackets:

(WordPad – Modem – HTML – Identity theft – Start)

- 1) is a language which is used to design the internet pages and sites.
- 2) is used to deal with texts.
- 3) We can open any program on the computer by menu.
- 4) Is of the harmful consequences from using the internet.
- 5) Is a device which connects computers by the telephone line.

C. Arrange the following steps for opening WordPad program:

- 1) Select Accessories. ()
- 2) Open Start menu by clicking Start from the Task Bar. ()
- 3) Select WordPad from the menu that will appear. ()
- 4) Click on All Programs. ()



Model Two

A. Correct the underline in the following sentences:

- 1) Color property is from the properties of <Body> in HTML. (.....)
- 2) E-mail is used in making conversations among many persons on the internet. (.....)
- 3) In HTML the tag < Title > is what all the page contents are typed in it.
- 4) Save As is used to save changes to the document in WordPad program with the same name. (.....)
- 5) Saving HTML should be with the extension txt. (.....)

B. Complete the following sentences from the brackets:

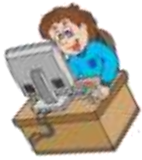
- 1) Menu is used to format the text in Notepad.
(View – Format – Edit)
- 2) The tag Is used in typing the text in the middle of the page.
(< Center > - < Title > - < Body >)
- 3) Means a text or image in the web page to move to another page or site.
(Hyperlink – Website – URL)
- 4) After typing the site address in the browser, click To load the site.
(OK – Yes – Go)
- 5) Bar is used to view the hidden part of the paper in the Notepad.
(Menu – Scroll – Status)

C. Complete to design a web page in which the word “Egypt” appears in the Center of the page and the Title is New :

```

<HTML>
  <Head>
    <.....>
      New
    </.....>
  </.....>
  <Body>
    <.....>
      Egypt
    </.....>
  </Body>
</.....>

```



Model Three

A. Put (√) or (×):

- 1) Save is used in WordPad to save changes. ()
- 2) There is no difference between the tags <P> and < BR > when creating a new line. ()
- 3) The tag < L > is used for adding an item to the sequential list. ()
- 4) From the ways of using the internet safely, is to upgrade all the programs including the operating system copy. ()
- 5) To activate the page in the browser, press F2 on the keyboard. ()

B. Complete the following:

- 1) From the advantages of HTML:
 - a).....
 - b)
- 2) The steps for printing two copies from the current page in the WordPad program:
 - a)
 - b)
 - c)

C. Complete to design web page with a yellow background containing a headline (The Egypt universities) in the center of the page in red color with font size 6 and contains a sequential list of the names of four universities:

```

<HTML>
  <Body BgColor = ".....">
    <P Align = ".....">
      <Font Color = "....." Size = "6">
        The Egypt universities
      </.....>
    </.....>
  <OL>
    <.....>Cairo university
    <.....>Ein Shams University
    <.....>Alexandria University
    <.....>Tanta University
  </.....>
</.....>
</HTML>

```



AL-AZHAR AL-SHARIF
SOUTH CAIRO ZONE

Fourth year exam, prim. stage 1434/1435 – 2013/2014

Second term

Computer

Time : 1½ hour

Answer the following questions :-

[Each question 2.5 marks]

(1) Put (√) or (×) :-

- 1- The World Wide Web is one of the fastest source of information . ()
- 2- You can surf the internet without using a browser . ()
- 3- There may be more than one website with the same address . ()
- 4- HTML is the language used to design web pages and web sites . ()
- 5- The commands in HTML language are called tags . ()

(2) Choose the correct answer :-

- 1- is a device used to connect a computer to the telephone line (Modem – Scanner – Hard disk) .
- 2- We mean by E-mail (Website Address – Electronic Mail – Hyperlink) .
- 3- is an unwanted program having a destructive job and it can copy itself .
(Hacker – Virus – Word)
- 4- The property is used to change the place of the text in the information page .
(Align – Password – Save)
- 5- is one of the bad effects of using the Web (Id robbery – Information Page – Hyperlink) .

(3) Correct the underlined words in the following sentences :-

- 1- One advantage of the Web is that it is difficult to connect & deal with the internet .
- 2- Menu Bar is the bar in which the program name is shown and on the right side there are the control buttons.
- 3- We can't receive electronic message through the e-mail service .
- 4- Virus allows the other to read your messages and know your secrets .
- 5- One of the positive effects when using the web is that you can be infected with the virus .

(4) Complete the following sentence using the words from the list :-

(Google – Type – The computer – Align – Internet Explorer)

- 1- The property is used with tag <P> to control align the text .
- 2- To connect to the web, we need
- 3- One of the most famous websites of search engines is
- 4- The property controls the shape of the symbol that appears next to the items in the lists .
- 5- is a program used to show web pages and web sites .

" Questions for first term "

– Arrange the steps of changing the desktop background :-

[10 marks]

- 1- Choose the image you want from the list "background" .
- 2- Click on OK button .
- 3- Open the shortcut list by right mouse click on the desktop .
- 4- Preview the background in the preview area .
- 5- Choose Properties then choose the tab of desktop from the top of the properties window .



الأزهر الشريف
الإدارة المركزية لمنطقة القاهرة الأزهرية

امتحان النقل من الصف الرابع الابتدائي (لغات) للعام الدراسي ١٤٣٦/١٤٣٥ هـ - ٢٠١٤/٢٠١٥ م
الفصل الدراسي الثاني الحاسب الآلي الزمن: - ساعة ونصف

Q1 : complete the sentences with appropriate word

من السؤال الأول إلى الرابع درجتان ونصف لكل

(Web designing – Browser – Internet – Protection – Body – Head)

- 1- is a linking between a lot of computers around the world.
- 2- Tag <Body> response of formatting.
- 3- HTML language used in
- 4- is a programs using in webs navigation.
- 5- programs response of save browsing to web sites .

Q2 : choose the correct Answer between bracts

- 1- Tag using in Formatting (texts – tables – pictures)
- 2- URL wrote in bar in internet explorer (title – tools – menu)
- 3- Language using in web designing is (HTML – HTTP – TCP/IP)
- 4- We can view page code by (View Source – Save as – Print)
- 5- Internet Explorer used in (word processing – drawing – navigation web page)

Q3 : Put (√) or (X)

- 1- The internet linking between millions computers around the world ()
- 2- Using Internet without protection displays computer of virus infection ()
- 3- <Center> using to left alignment for text ()
- 4- "HTML" used in web page designing ()
- 5- There is no negative impact of the Internet ()

Q4 : Mache from group (A) with group (B)

A		B	
1	 ... 	1	Is one of important search engine
2	 ... 	2	Used to font formatting
3	 ... 	3	We can by it navigation between pages
4	google	4	Used to make non-serial menus
5	HEYPERLINK	5	Is one of important web browsers
		6	Used to make serial menus

Question for students retarded: complete the sentences with appropriate word

- 1- Close icon there are in bar
- 2- We can open "Paint" by menu
- 3- is one of input units
- 4- is one of output units
- 5- contain the deleting files

عشر درجات

Good luck



الأزهر الشريف
الإدارة المركزية لمنطقة القاهرة الأزهرية

امتحان النقل من الصف الرابع الابتدائي (لغات) للعام الدراسي ١٤٣٦/١٤٣٧ هـ - ٢٠١٥/٢٠١٦ م
الفصل الدراسي الثاني الحاسب الآلي الزمن: - ساعة ونصف

Question 1: Complete the following sentences from the brackets :

(WordPad - Modem - <html> - Start)

ثلاث درجات

- 1- the first tag in html page is
- 2- is used to deal with text.
- 3- We can open any program on the computer by Menu .

Question 2 : choose the correct Answer between bracts

ثلاث درجات

- 1- Tag using in Formatting (fonts – tables – pictures)
- 2- URL wrote in bar in internet explorer (address – tools – menu)
- 3- Language using in web designing is (HTML – HTTP – TCP/IP)

Question 3 : Arrange the following steps for opening WordPad program :

- Select Accessories. ()
- Open Start menu by clicking Start from the Task Bar . ()
- Select WordPad from the menu that will appear . ()
- Click on All Programs . ()

اربع درجات

Question for students retarded: complete the sentences with appropriate word

- 1- "Close" icon is in bar
- 2- We can open "Paint" from menu
- 3- is one of input units
- 4- is one of output units
- 5- contain the deleted files

عشر درجات

Good luck





Answers

1) Complete the following sentences from the brackets:

(**Network – Internet Explorer – Modem – Internet - Email**)

1. **Network** means connecting computers to each other's for sharing the information and providing some services and they may be in the same room, building or in separated places.
2. **Modem** is a device used for connecting the computer to the telephone line.
3. **Internet Explorer** is used for displaying the Internet pages and sites.
4. We can get information with the least cost via **Internet**.
5. We can send and receive emails in a short time using **Email**.

2) Complete the following sentences from the brackets:

(**Identity theft – Password – Virus – Hacker – Wasting Time**)

1. **Virus** is undesired program and it has destructive functions and is able to reproduce itself.
2. Stealing the personal data as the passwords and banks accounts details is called **Identity theft**.
3. The person who makes the non-permitted penetration of the computer is called **Hacker**.
4. From the precautions for using the computer, is to protect the computer via **Password**.
5. From the negative effects of using the Internet is **Wasting Time**.





3) Complete the following sentences from the brackets:

(HTML - Address Bar – Information Pages – Hyperlink – Internet Explorer)

1. The site consists of one or group of connected **Information Pages**.
2. **Internet Explorer** is of the most famous browsing programs.
3. Internet Explorer is used in opening the **HTML** files.
4. The desired site address is typed in **Address Bar**.
5. **Hyperlink** is a text or image in the information page and when click on it, another site will be opened.

4) Complete the following sentences from the brackets:

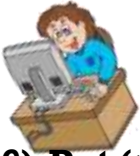
(Notepad – Source – HTML – Tag – Internet)

6. HTML files should be with the extension of **HTML**.
7. Using HTML doesn't need connection to **Internet**.
8. We can view the programming code of any web page through **Source** From View menu.
9. **Notepad** is an editor which is used for typing the HTML commands.
10. **Tag** is the statement between the brackets <>.

5) Put (✓) or (X):

1. Internet Network is one of the most important sources of the information. (✓)
2. We should use a browser for opening the Internet pages. (✓)
3. The site www.google.com is from the most important sites for creating free emails. (×)
4. The connected computers for creating a network should be in the same place. (×)
5. The ease of dealing and connection are of the advantages of the Internet Network. (✓)





6) Put (✓) or (X):

1. We can browse the Internet Sites and pages without using any browser. (×)
2. There is one way for opening Internet Explorer through its icon on the Desktop. (×)
3. Hyperlink may be in the form of text or image in the information page. (✓)
4. We can load the site after typing its address through clicking Go on the Address Bar. (✓)
5. The first site page which appears is named the default. (×)

7) Put (✓) or (✕) :

1. HTML isn't a programming language similar to the other programming languages. (✓)
2. When using HTML the computer should be connected to the Internet. (×)
3. The browser never affected by the spaces or lines between the statements. (✓)
4. The statements are typed between brackets () in HTML. (×)
5. All the files typed in HTML code should begin with the tag <HTML>. (✓)





10) Choose the correct answer from the brackets:

1. After opening Internet Explorer, the website address is written in the bar.
(**Address** – Menu – Website Address)
2. To load the site, click Go or press Button from the keyboard.
(Shift – **Enter** – Ctrl)
3. To print a page containing important information from any site, click Print from Menu
(Edit – **File** – View)
4. We can chat with any person all over the world at the same time via Internet through
(Email – Search – **Chat**)
5. From the requirement for connection to the Internet.
(Paint – **Telephone line** – T.V)

11) Choose the correct answer from the brackets:

1. One or group of related web pages is called
(Site main page – **Website** – Web Page)
2. A link which transfers you to another site is (Site address – Email – **Hyperlink**)
3. After typing the site address in Internet Explorer, press Button from the keyboard to load the site.
(Alt – Shift– **Enter**)
4. click on Internet Explorer icon to open this site window.
(One – **double** – three)
5. The site address is typed in in the browser window.
(**Address Bar** – Title Bar – Tools Bar)



12) Give the suitable term for the following sentences:

1. The tag which contains the title of the web page which appears in the browser's Title Bar. (**<Title>**)
2. Means all what is typed between the brackets < >. (**Tag**)
3. A simple and easy language which is used for creating and designing the information page on the Internet. (**HTML**)

13) Correct the underline in the following sentences:

1. You can view the code of any information page by opening File menu and selecting Source in the browser. (**View**)
2. The difference between the start and end statements is -. (**/**)
3. To save the statements in **Notepad**, select Open from **File** menu. (**Save or Save As**)
4. WordPad is one of the Internet browsers. (**Internet Explorer**)
5. All HTML files should ends with the statement <HTML>. (**</HTML>**)
6. All the contents of the web page are typed in the code between the start and the end of the tags <HTML>. (**<Body>**)

14) Complete the following:

From the advantages of the Internet Network:

1. The ease of connection and dealing with the Internet.
2. Providing a great of information in all fields.
3. Providing recent information.
4. Connecting with any place in the world and in any time.





15) Put (✓) or (X) :-

1. BgColor property is being shared by many Tags. (×)
2. To view the designed files by HTML, use the paint program. (×)
3. We can't change style of the default font of the browser. (×)
4. To change the font style, we use the property Face. (✓)
5. Align is used for changing the text location in the web page. (✓)

16) Choose the correct answer from the brackets:

1. BgColor is used with Tag (`<P>` - **`<Body>`** - `<Title>`).
2. To save changes, select (Save As – Open – **Save**).
3. From the properties of `< P >` Tag is (**Align** – BgColor – Background).
4. To refresh the web page and view the changes, press Button on the keyboard. (F2 – **F5** – F3)
5. We should type the text which needs to be processedEnd Tag. (**Before** – With – After)
6. To change the font size to bigger font:
 - a. ``
 - b. ``**
 - c. ``





17) Put (✓) or (X):-

1. When using the Tag
, it should be ended with the Tag </BR>. (×)
2. The property Dir is used with the Tag <Body>. (×)
3. Center tag is used for aligning the text to the middle of the web page. (✓)
4. To create a numbering list, we use the tag and to determine the end and start of the list. (✓)
5. The single tag is used for creating the items in the sequential list only. (×)

18) Match from (A) to the suitable in (B):-

A		B	
1	<Center>	A	It is a single tag which is typed at the end of the line for creating a new line or paragraph.
2	<P>	B	A property which is used for controlling the shape of symbols in the lists
3	 	C	A tag for aligning the text at the middle of the page in general
4	<DIR>	D	A tag which is used in alignment by using the Align property
5	Type	E	A tag for adding an item in the list
6		F	A property which is used to control the text direction in the page

(1, C) (2, D) (3, A) (4, F) (5, B) (6, E)



19) Give the suitable term for the following sentences:

(Start button – program – loading a program)

1. Copying a program from the hard disk to memory and the program display on the screen. **(loading a program)**
2. A button on the desktop, when clicking it, a menu opens and is used for opening programs. **(Start button)**
3. One or more files saved on the memory, when double click on it, a copy of it will be on the memory and will appear on the screen. **(program)**

20) Match from (A) to the suitable in (B):

A		B	
1	Status Bar	A	An empty white space for typing in it.
2	Title Bar	B	A set of menus containing commands.
3	Scroll bars	C	It appears in the typing space and takes the shape of I
4	Text Cursor	D	It contains the program and file names.
5	Tool Bar	E	It is down to the program window and it displays information about the page.
6	Menu Bar	F	It displays the hidden location in the page.
7	Space of writing	G	It contains icons for the important commands in the menus.

(1, E) (2, D) (3, F) (4, C) (5, G) (6, B) (7, A)



21) Complete the following sentences from between brackets:

(Format – Format Bar – Edit – Selection – Open - File)

1. **Selection** means selecting a part or all of the text to format it.
2. **Format** means the style of text as the text size and color.
3. To open a text file on the computer, select **Open** from File menu.
4. We can format the text by **Format Bar**.
5. To create a new Document, select "New" from **File** Menu.

22) Match from (A) to the suitable in (B):

(A)		(B)	
1	B	A	To make the font italic.
2	<i>I</i>	B	To underline the text.
3	<u>U</u>	C	To make the font bold.

(1, C) (2, A) (3, B)



23) Put (√) or (×):

1. When making changes to a previously saved file, there will be no difference between Save and Save As. (×)
2. There is automatically an icon for Save As in the Toolbar. (×)
3. We can't connect many printers to the computer. (×)
4. Print and Print Preview have icons in the Toolbar. (√)
5. We find Save and Print command in Edit menu. (×)

24) Complete the following sentences from the brackets:

(File – paper – Print Preview – Close – Save As – Save in)

1. To select Save As, open **File** Menu.
2. When applying changes to a previously saved file and we want to change it name or location, select **Save As**.
3. Select save location from the menu beside **Save in**.
4. We use **Print Preview** to make a preview of the page before printing it.
5. To close Print Preview window, click **Close**.
6. The printer is a device which is used to get the document in the form of **paper**.





Model One

A. Put (✓) or (×):

- 1) Internet network means the connection of computers in the same location. (×)
- 2) Hyperlink may be in the form of an image in the web page. (✓)
- 3) Paint program is used to deal with the texts. (×)
- 4) The site may be one web page or more connected together. (✓)
- 5) The virus is a program which has destructive and unwanted functions. (✓)

B. Complete the following sentences from the brackets:

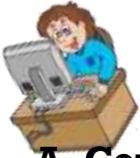
(WordPad – Modem – HTML – Identity theft – Start)

- 1) **HTML** is a language which is used to design the internet pages and sites.
- 2) **WordPad** is used to deal with texts.
- 3) We can open any program on the computer by **Start** menu.
- 4) **Identity theft** Is of the harmful consequences from using the internet.
- 5) **Modem** Is a device which connects computers by the telephone line.

C. Arrange the following steps for opening WordPad program:

- 1) Select Accessories. (3)
- 2) Open Start menu by clicking Start from the Task Bar. (1)
- 3) Select WordPad from the menu that will appear. (4)
- 4) Click on All Programs. (2)





Model Two

A. Correct the underline in the following sentences:

- 1) Color property is from the properties of <Body> in HTML. (Font)
- 2) E-mail is used in making conversations among many persons on the internet. (Chat)
- 3) In HTML the tag < Title > is what all the page contents are typed in it. (Body)
- 4) Save As is used to save changes to the document in WordPad program with the same name. (Save)
- 5) Saving HTML should be with the extension txt. (html)

B. Complete the following sentences from the brackets:

- 1) Menu is used to format the text in Notepad.
(View – **Format** – Edit)
- 2) The tag Is used in typing the text in the middle of the page.
(**< Center >** - < Title > - < Body >)
- 3) Means a text or image in the web page to move to another page or site.
(**Hyperlink** – Website – URL)
- 4) After typing the site address in the browser, click To load the site.
(OK – Yes – **Go**)
- 5) Bar is used to view the hidden part of the paper in the Notepad.
(Menu – **Scroll** – Status)

C. Complete to design a web page in which the word “Egypt” appears in the Center of the page and the Title is New :

```

<HTML>
  <Head>
    <Title>
      New
    </Title >
  </Head >
  <Body>
    <Center>
      Egypt
    </Center>
  </Body>
</ HTML >

```



Model Three

A. Put (√) or (×):

- 1) Save is used in WordPad to save changes. (√)
- 2) There is no difference between the tags <P> and < BR > when creating a new line. (×)
- 3) The tag < L > is used for adding an item to the sequential list. (×)
- 4) From the ways of using the internet safely, is to upgrade all the programs including the operating system copy. (√)
- 5) To activate the page in the browser, press F2 on the keyboard. (×)

B. Complete the following:

- 1) From the advantages of HTML:
a) Simple Rules b) Not related to a certain Operating System
- 2) The steps for printing two copies from the current page in the WordPad program:
a) Open File menu and select Print b) Select the number of copies(2) in the Number of Copies
c) Click on Print

C. Complete to design web page with a yellow background containing a headline (The Egypt universities) in the center of the page in red color with font size 6 and contains a sequential list of the names of four universities:

```
<HTML>
  <Body BgColor = "Yellow">
    <P Align = "Center">
      <Font Color = "Red" Size = "6">
        The Egypt universities
      </ Font >
    </P>
  <OL>
    <LI>Cairo university
    < LI >Ein Shams University
    < LI >Alexandria University
    < LI >Tanta University
  </OL>
</Body>
</HTML>
```




AL-AZHAR AL-SHARIF
SOUTH CAIRO ZONE

Fourth year exam, prim. stage 1434/1435 – 2013/2014

Second term

Computer

Time : 1½ hour

Answer the following questions :-

[Each question 2.5 marks]

(1) Put (√) or (×) :-

- 1- The World Wide Web is one of the fastest source of information . (✓)
- 2- You can surf the internet without using a browser . (X)
- 3- There may be more than one website with the same address . (X)
- 4- HTML is the language used to design web pages and web sites . (✓)
- 5- The commands in HTML language are called tags . (✓)

(2) Choose the correct answer :-

- 1- is a device used to connect a computer to the telephone line (Modem – Scanner – Hard disk) .
- 2- We mean by E-mail (Website Address – Electronic Mail – Hyperlink) .
- 3- is an unwanted program having a destructive job and it can copy itself .
(Hacker – Virus – Word)
- 4- The property is used to change the place of the text in the information page .
(Align – Password – Save)
- 5- is one of the bad effects of using the Web (Id robbery – Information Page – Hyperlink) .

(3) Correct the underlined words in the following sentences :-

- 1- One advantage of the Web is that it is difficult to connect & deal with the internet . *Easy*
- 2- Menu Bar is the bar in which the program name is shown and on the right side there are the control buttons. *Title*
- 3- We can't receive electronic message through the e-mail service . *can*
- 4- Virus allows the other to read your messages and know your secrets . *Hacking*
- 5- One of the positive effects when using the web is that you can be infected with the virus . *negative*

(4) Complete the following sentence using the words from the list :-

(Google – Type – The computer – Align – Internet Explorer)

- 1- The property *Align*..... is used with tag <P> to control align the text .
- 2- To connect to the web, we need *The...computer*
- 3- One of the most famous websites of search engines is *Google*.....
- 4- The property *Type*..... controls the shape of the symbol that appears next to the items in the lists .
- 5- *Internet Explorer*..... is a program used to show web pages and web sites .

" Questions for first term "

– Arrange the steps of changing the desktop background :-

[10 marks]

- 1- Choose the image you want from the list "background" .
- 2- Click on OK button .
- 3- Open the shortcut list by right mouse click on the desktop .
- 4- Preview the background in the preview area .
- 5- Choose Properties then choose the tab of desktop from the top of the properties window .



الأزهر الشريف
الإدارة المركزية لمنطقة القاهرة الأزهرية

امتحان النقل من الصف الرابع الابتدائي (لغات) للعام الدراسي ١٤٣٥/١٤٣٦ هـ - ٢٠١٤/٢٠١٥ م
الفصل الدراسي الثاني الحاسب الآلي الزمن:- ساعة ونصف

Q1 : complete the sentences with appropriate word

من السؤال الأول إلى الرابع درجتان ونصف لكل

(Web designing – Browser – Internet – Protection – Body – Head)

- 1- Internet is a linking between a lot of computers around the world.
- 2- Tag <Body> response of Body... formatting.
- 3- HTML language used in web..designing
- 4- Brower is a programs using in webs navigation.
- 5- Protection programs response of save browsing to web sites .

Q2 : choose the correct Answer between bracts

- 1- Tag using in Formatting (texts – tables – pictures)
- 2- URL wrote in bar in internet explorer (title – tools – menu)
- 3- Language using in web designing is (HTML – HTTP – TCP/IP)
- 4- We can view page code by (View Source – Save as – Print)
- 5- Internet Explorer used in (word processing – drawing – navigation web page)

Q3 : Put (✓) or (X)

- 1- The internet linking between millions computers around the world (✓)
- 2- Using Internet without protection displays computer of virus infection (✓)
- 3- <Center> using to left alignment for text (X)
- 4- "HTML" used in web page designing (✓)
- 5- There is no negative impact of the Internet (X)

Q4 : Mache from group (A) with group (B)

A		B	
1	 ... (2)	1	Is one of important search engine
2	 ... (6)	2	Used to font formatting
3	 ... (4)	3	We can by it navigation between pages
4	google (1)	4	Used to make non-serial menus
5	HEYPERLINK (3)	5	Is one of important web browsers
		6	Used to make serial menus

Question for students retarded: complete the sentences with appropriate word

- 1- Close icon there are in bar
- 2- We can open "Paint" by menu
- 3- is one of input units
- 4- is one of output units
- 5- contain the deleting files

عشر درجات

Good luck



الأزهر الشريف
الإدارة المركزية لمنطقة القاهرة الأزهرية

نموذج إجابة امتحان الصف الرابع الابتدائي (لغات) للفصل الدراسي الثاني
للعام الدراسي ١٤٣٦/١٤٣٧هـ - ٢٠١٥/٢٠١٦م

Question 1: Complete the following sentences from the brackets :

1- <html>

ثلاث درجات

2- WordPad

3- Start

Q2 : choose the correct Answer between bracts

ثلاث درجات

1- Fonts

2- address

3- HTML

Question 3 : Arrange the following steps for opening WordPad program :

• Select Accessories.

(3)

اربع درجات

• Open Start menu by clicking Start from the Task Bar .

(1)

• Select WordPad from the menu that will appear .

(4)

• Click on All Programs .

(2)

Question for students retarded: complete the sentences with appropriate word

عشر درجات

1- Title

2- Start

3- Keyboard (or other correct answer)

4- Monitor (or other correct answer)

5- Recycle Bin

Good luck