

Final Net Revision

Second Term 2016 - 2017

Third Primary





Questions

1) Choose the correct answer:

1. RAM stands for (Random Access Memory - Read Only Memory)
2. (RAM – ROM) is like a whiteboard; you can use it to read, write and change data.
3. RAM and ROM are (Primary Memory – Secondary Memory)
4. ROM (reads and writes – reads) data.
5. (RAM – ROM) loses all data and information, when the electricity is switched off.
6. HD stands for (Compact Disk – Hard Disk).
7. FM stands for (Flash Memory – Hard Disk).
8. CD stands for (Floppy Disk – Compact Disk).
9. HD is inside (Motherboard – System Unit).
10. CD is inside (System Unit – CD Drive).

**Computer Net Revision
(Language Section)**



2) Complete the following sentences:

1. The memory that can read but never write is the
2. The memory that can read and write is the
3. RAM stands for
4. ROM stands for
5.doesn't lose data when the electricity is switched off.

3) Underline the correct answer:



(Hard Disk – Flash Memory – Compact Disk)



(Hard Disk – Flash Memory – Compact Disk)



(Hard Disk – Flash Memory – Compact Disk)



4) Mention the types of Data:

1.
2.
3.
4.

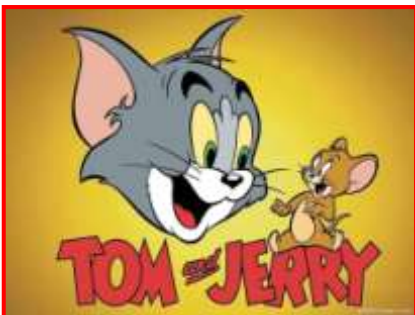
5) What types of data do the following pictures represent?



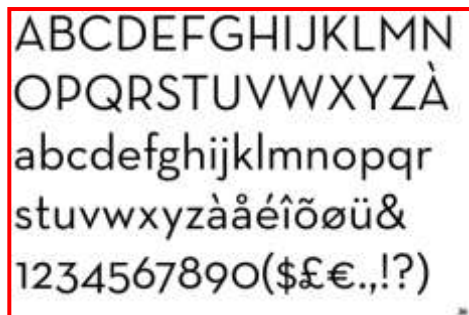
.....



.....



.....



.....

**Computer Net Revision
(Language Section)**



6) **Put (✓) in the circle if the picture has a processor and (X) if it is not:**



7) **Complete the following sentences from the brackets:**

(Google – Search – Search Engine – Text – Internet Browser)

- 1..... is one of the services of the Internet.
- 2..... is a program that used to look for information on the Internet.
- 3.....is a Search Engine.
- 4.To search the Internet, you should open the.....
- 5.We can search for pictures, videos, sounds and.....



Computer Net Revision
(Language Section)

Complete the following sentences from the brackets:

(@ – Address bar – Account – E-mail Address – Yahoo)

1. To make an E-mail Address you should first create New
- 2.....is a website helps you to create a new account.
3. You need.....to send and receive E-mails.
4. To open Yahoo website, write (www.yahoo.com) in the.....
5. E-mail Address must has the symbol.....

8) Put (✓) or (X):

1. Internet is used only to search for the information that we need. ()
2. We are using chat programs to talk to friends but we can't see them. ()
3. We can buy anything using the Internet. ()
4. Internet is used to send information quickly between computers around the world. ()
5. E-mail helps to send and receive messages in Egypt only. ()
6. Internet Browser is a program that shows the web pages on your computer. ()
7. The website contains only one web page. ()
8. Internet Explorer is the only Internet Browser. ()
9. Home command takes you to the first page in a website. ()
10. Refresh command is used to stop loading the current page. ()



9) To create a new Account, write the numbers inside the squares:

The screenshot shows the Yahoo! sign-up page with the following fields highlighted by red boxes:

- 1. First name: Ahmad
- 2. Last name: Sameh
- 3. Email address: ahmadsameh48@yahoo.com
- 4. Password:
- 5. Mobile number: +20 1200000000
- 6. Birthday: 11 August 1977
- 7. Gender: Male

1. Mobile Number.
2. Birth Date.
3. Gender.
4. First and Last Name.
5. E-mail Address.
6. Password.





Revision Sheet

A. Complete the following sentences:

1. ROM (reads and writes – reads) data.
2. (RAM – ROM) loses all data and information, when the electricity is switched off.
3. HD stands for (Compact Disk – Hard Disk).
4. HD is inside (Motherboard – System Unit).
5. The operation $[18 < 87]$ is a (Logic - Arithmetic) operation.

B. Put (✓) or (X):

1. Data in ROM can be read only and we can't change it. ()
2. Processor (CPU) passes the information to the Memory. ()
3. Flash Memory saves data and information for a short time. ()
4. Text is the only type of data. ()
5. The processor (CPU) has many types. ()

C. Look at the pictures and write the name of each part:

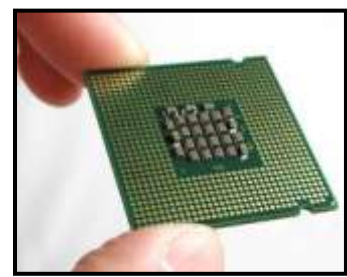
(Processor – Hard Disk - RAM)



.....



.....



.....



Computer Net Revision
(Language Section)

Revision Sheet

A. Choose the correct answer:

1. The memory that can read and write is the
2. CD stands for
3. The processor components are.....and.....
- 4.....is used to send information quickly between computers around the world.
5. Ais a group of web pages.
- 6.....command takes you to the first page in a website.
- 7.....is a program that used to look for information on the Internet.
8. E-mail Address must has the symbol.....

B. Put (✓) or (X):

1. ROM doesn't lose data when the electricity is switched off. ()
2. Hard Disk is inside System Unit. ()
3. You can't save and delete data & information inside Hard Disk. ()
4. Arithmetic Operations such as greater than (>), less than (<). ()
5. Internet is used only to search for the information that we need. ()
6. We are using chat programs to talk to friends but we can't see them. ()
7. Internet Explorer is the only Internet Browser. ()
8. Refresh command is used to stop loading the current page. ()



Answers

1) Choose the correct answer:

1. RAM stands for (**Random Access Memory** - Read Only Memory)
2. (**RAM** – ROM) is like a whiteboard; you can use it to read, write and change data.
3. RAM and ROM are (**Primary Memory** – Secondary Memory)
4. ROM (reads and writes – **reads**) data.
5. (**RAM** – ROM) loses all data and information, when the electricity is switched off.
6. HD stands for (Compact Disk – **Hard Disk**).
7. FM stands for (**Flash Memory** – Hard Disk).
8. CD stands for (Floppy Disk – **Compact Disk**).
9. HD is inside (Motherboard – **System Unit**).
10. CD is inside (System Unit – **CD Drive**).



2) Complete the following sentences:

1. The memory that can read but never write is the **ROM**.
2. The memory that can read and write is the **RAM**.
3. RAM stands for **Random Access Memory**.
4. ROM stands for **Read Only Memory**.
5. **ROM** doesn't lose data when the electricity is switched off.

3) Underline the correct answer:



(Hard Disk – **Flash Memory** – Compact Disk)



(**Hard Disk** – Flash Memory – Compact Disk)



(Hard Disk – Flash Memory – **Compact Disk**)



4) Mention the types of Data:

1. Text
2. Pictures
3. Animated Pictures
4. Sound

5) What types of data do the following pictures represent?



Pictures



Sound



Animated Pictures



Text

Computer Net Revision
(Language Section)



6) Put (✓) in the circle if the picture has a processor and (X) if it is not:



7) Complete the following sentences from the brackets:

(Google – Search – Search Engine – Text – Internet Browser)

1. **Search** is one of the services of the Internet.
2. **Search Engine** is a program that used to look for information on the Internet.
3. **Google** is a Search Engine.
4. To search the Internet, you should open the **Internet Browser**.
5. We can search for pictures, videos, sounds and **Text**.



Complete the following sentences from the brackets:

(@ – Address bar – Account – E-mail Address – Yahoo)

1. To make an E-mail Address you should first create New **Account**.
2. **Yahoo** is a website helps you to create a new account.
3. You need **E-mail Address** to send and receive E-mails.
4. To open Yahoo website, write (www.yahoo.com) in the **Address bar**.
5. E-mail Address must have the symbol **@**.

8) Put (√) or (X):

1. Internet is used only to search for the information that we need. (X)
2. We are using chat programs to talk to friends but we can't see them. (X)
3. We can buy anything using the Internet. (√)
4. Internet is used to send information quickly between computers around the world. (√)
5. E-mail helps to send and receive messages in Egypt only. (X)
6. Internet Browser is a program that shows the web pages on your computer. (√)
7. The website contains only one web page. (X)
8. Internet Explorer is the only Internet Browser. (X)
9. Home command takes you to the first page in a website. (√)
10. Refresh command is used to stop loading the current page. (X)



9) Write the numbers inside the squares:

The screenshot shows the Yahoo! sign-up page. The fields are numbered as follows:

- 4: First name (Ahmad)
- 5: Last name (Sameh)
- 6: Username (ahmadsameh48)
- 1: Phone number (+20 1200000000)
- 2: Birthday (11 August 1977)
- 3: Gender (Male)

1. Mobile Number.
2. Birth Date.
3. Gender.
4. First and Last Name.
5. E-mail Address.
6. Password.





Revision Sheet

A. Complete the following sentences:

1. ROM (reads and writes – **reads**) data.
2. (**RAM** – ROM) loses all data and information, when the electricity is switched off.
3. HD stands for (Compact Disk – **Hard Disk**).
4. HD is inside (Motherboard – **System Unit**).
5. The operation $[18 < 87]$ is a (**Logic** - Arithmetic) operation.

B. Put (√) or (X):

1. Data in ROM can be read only and we can't change it. (√)
2. Processor (CPU) passes the information to the Memory. (√)
3. Flash Memory saves data and information for a short time. (×)
4. Text is the only type of data. (×)
5. The processor (CPU) has many types. (√)

C. Look at the pictures and write the name of each part:

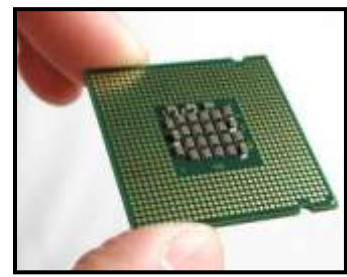
(Processor – Hard Disk - RAM)



Hard Disk



RAM



Processor



Revision Sheet

A. Choose the correct answer:

1. The memory that can read and write is the **RAM**.
2. CD stands for **Compact Disk**.
3. The processor components are **ALU** and **Control Unit**.
4. **Internet** is used to send information quickly between computers around the world.
5. A **Website** is a group of web pages.
6. **Home** command takes you to the first page in a website.
7. **Search Engine** is a program that used to look for information on the Internet.
8. E-mail Address must have the symbol **@**.

B. Put (√) or (X):

1. ROM doesn't lose data when the electricity is switched off. (√)
2. Hard Disk is inside System Unit. (√)
3. You can't save and delete data & information inside Hard Disk. (×)
4. Arithmetic Operations such as greater than (>), less than (<). (×)
5. Internet is used only to search for the information that we need. (×)
6. We are using chat programs to talk to friends but we can't see them. (×)
7. Internet Explorer is the only Internet Browser. (×)
8. Refresh command is used to stop loading the current page. (×)